

BUSINESS PARK EAST

Carbondale, Illinois

LOCATION

IL Rte 13 and Reed Station Road

OWNERSHIP

City of Carbondale
Carbondale Business Development Corporation

UTILITIES

WATER

Supplier: City of Carbondale
Source: Cedar Lake
Service: 12" main; 2000 - 2500 GPM

SANITARY SEWER

Supplier: City of Carbondale
Pre-treatment: Trickling filter
Treatment: Aeration basin
Service: 6" force main

ELECTRIC

AmerenCIPS - 34.5 KV onsite
Egyptian Elec. Coop. - 69 KV onsite

NATURAL GAS

AmerenCIPS
10" gas transmission line

TRANSPORTATION

HIGHWAY

Illinois Route 13 E/W Divided 4-lane
U. S. Highway 51 N/S
Interstate 57 - 12 miles

RAIL

Canadian National - mainline track 3 miles west
Chicago to New Orleans - 16 trains daily

AIR

Southern Illinois Airport - 5 miles
3 all-weather runways - ILS approach
FAA-approved tower
Commercial air service - Williamson County Airport

SPECIAL NOTES

Enterprise Zone Benefits
Fire Insurance Rate - ISO 4
Phase I Environmental Assessment Available
General Industrial (GI) Zoning
Protective Covenants
Financial Assistance Available to Qualified Companies

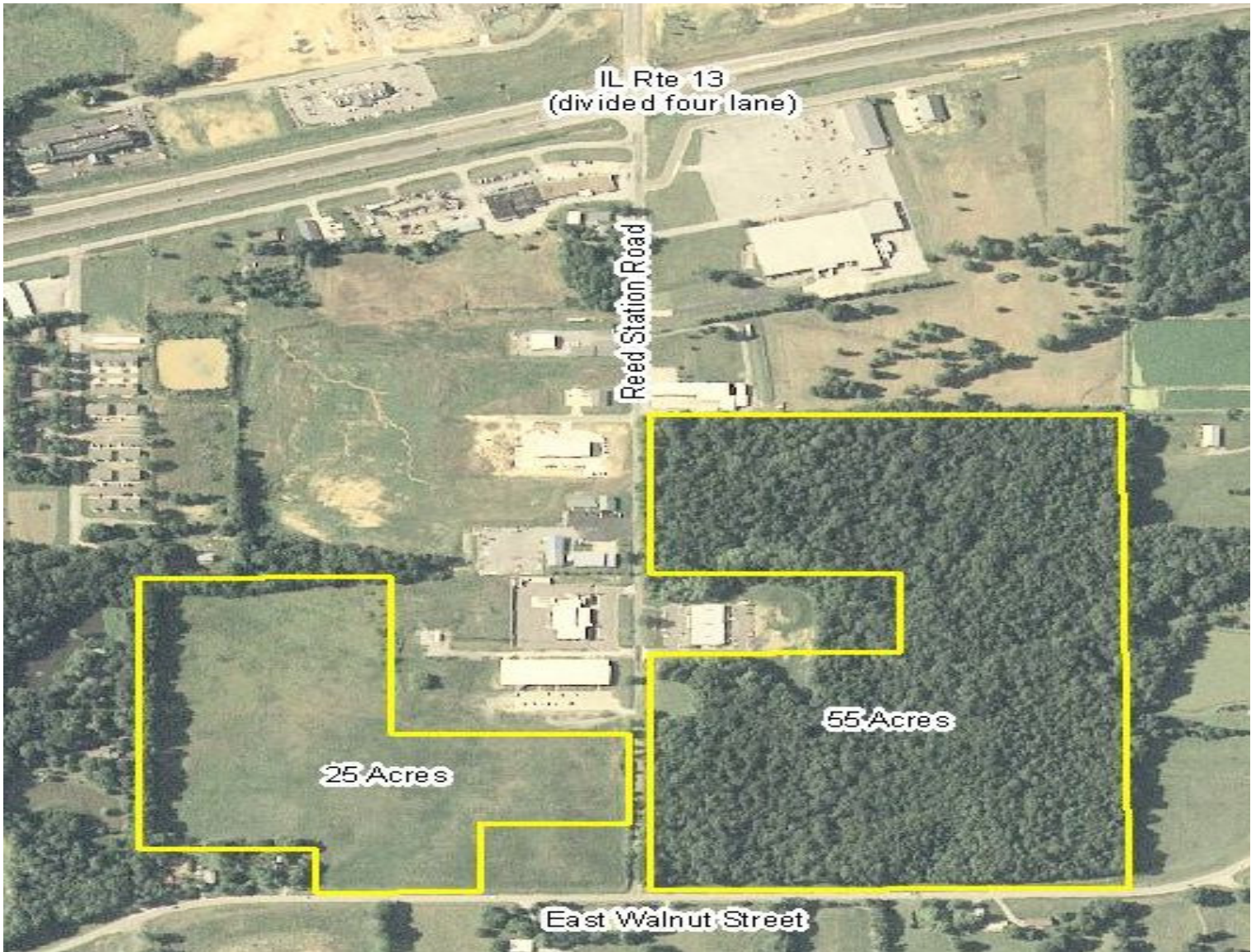
CONTACT

Kevin Baity, Assistant City Manager for
Economic Development
City of Carbondale
200 S. Illinois Avenue - P. O. Box 2047
Carbondale, IL 62902
Phone 618/457-3226 - Fax 618/457-3224
email: kbaity@ci.carbondale.il.us
www.explorecarbondale.com



BUSINESS PARK EAST

Carbondale, Illinois



BUSINESS PARK EAST

Carbondale, Illinois

